



High Performance Valves



BALL VALVES



BUTTERFLY VALVES



KNIFE GATE VALVES

Entresol products are designed for a wide range of industrial applications and services.

Who We Are

Entresol founded in 2011, Entresol India offers US technology, made for India.

Entresol provides a wide range of superior quality ball valves, butterfly valves and knife edge gate valves by implementing a robust quality management system compliant to ISO 9001-2015. Our products are fully integrated and cater to a wide spectrum of applications including Oil & Gas, Power Generation, Mining, Chemical process, Marine, Food & Beverages, Water and other industrial market. The infrastructure, technical support, continuous innovations and close customer interaction have enabled ENTRESOL, to consolidate its position at the leading edge of valve and Automation systems among all kind of organizations in India.

BALL VALVES



Series-FBV-S-1000

Floating One Piece

½" to 4" (DN15 - DN100)

Class 150#, 300#



Series-FBV-S-2000

Floating Two Piece

½" to 12" (DN15 - DN300)

Class 150#, 300#



Series-FBV-S-3000

Floating Three Piece

½" to 12" (DN15 - DN300)

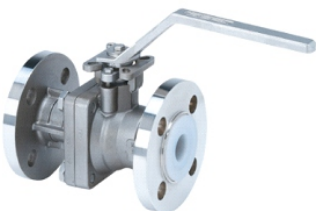
Class 150#, 300#

Series-FBV-HP-3000

Floating HP Three Piece

½" to 2" (DN15 - DN50)

Class 150# to 2500#



Series-FBV-PFA-2000

Floating PFA Bined Ball Valve

½" to 6" (DN15 - DN150) Special on Request

Class 150#, PN10-16, JIS 10K

Series-TMBV-2000-3000

Trunnion Mounted Ball Valve

Two-Three Piece Design

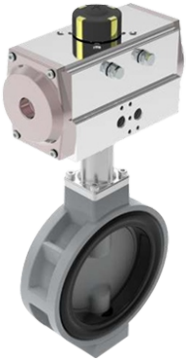
2" to 36" (DN50 - DN1200)

Class 800# to 2500#



BUTTERFLY VALVES

Butterfly Valves (Concentric Design) Concentric Design In Resilient Seated



Series - 100

Aluminium Body Soft Seated

1 ½" to 12" (DN40 – DN300) PN10,
PN16, 150#

Series - 101

Cast Grade Body Soft Seated

2" to 24" (DN50–DN600)
PN10, PN16, 150#



Series - 102

Cast Grade with Lined

2" to 24" (DN50–DN600) PN10

Series - 103

Cast Grade Body

Soft Seated with Double Flange

2" to 48" (DN50–DN1200) PN10,
PN16, 150#



Butterfly Valves (Double Offset Design) High Performance & High Temperature



Series - 200

High Performance Metal Seated

2" to 48" (DN50 – DN1200)

Class 150#, 300#, Special on
Request

Series - 201

Soft Seated High Performance

4" to 48" (DN100 – DN1200)

Class 150#, 300#, Special on
Request



Butterfly Valves (Triple Offset Design) High Pressure-zero Leakage Metal To Metal Sealing



Series - 300

High Performance Triple Offset

2" to 48" (DN50 – DN1200)

Class 150#, 300#, 600#, 900#,
1500#, Special on Request



KNIFE GATE VALVES



Knife Gate Valve

2" to 48" (DN50 – DN1200)

DIN PN 10 and ANSI B 16.5 150#,

Special on Request



Head Quarter

18 Bartol Street, #1176 San Francisco, CA 94133,
USA.